

Quality ID #112 (NQF 2372): Breast Cancer Screening
– National Quality Strategy Domain: Effective Clinical Care
– Meaningful Measure Area: Preventive Care

2020 COLLECTION TYPE:
MIPS CLINICAL QUALITY MEASURES (CQMS)

MEASURE TYPE:
Process

DESCRIPTION:
Percentage of women 50 - 74 years of age who had a mammogram to screen for breast cancer in the 27 months prior to the end of the measurement period

INSTRUCTIONS:
This measure is to be submitted a minimum of **once per performance period** for female patients seen during the performance period. There is no diagnosis associated with this measure. The patient should either be screened for breast cancer on the date of service OR there should be documentation that the patient was screened for breast cancer at least once within **27 months prior to the end of the performance period**. Performance for this measure is not limited to the performance period. This measure may be submitted by Merit-based Incentive Payment System (MIPS) eligible clinicians who perform the quality actions described in the measure based on services provided and the measure-specific denominator coding.

Measure Submission Type:
Measure data may be submitted by individual MIPS eligible clinicians, groups, or third party intermediaries. The listed denominator criteria are used to identify the intended patient population. The numerator options included in this specification are used to submit the quality actions as allowed by the measure. The quality-data codes listed do not need to be submitted by MIPS eligible clinicians, groups, or third party intermediaries that utilize this modality for submissions; however, these codes may be submitted for those third party intermediaries that utilize Medicare Part B claims data. For more information regarding Application Programming Interface (API), please refer to the Quality Payment Program (QPP) website.

DENOMINATOR:
Women 51 - 74 years of age with a visit during the measurement period

DENOMINATOR NOTE: *The intent of the measure is that starting at age 50 women should have one or more mammograms every 24 months with a 3 month grace period. The intent of the exclusion for individuals age 66 and older residing in long-term care facilities, including nursing homes, is to exclude individuals who may have limited life expectancy and increased frailty where the benefit of the process may not exceed the risks. This exclusion is not intended as a clinical recommendation regarding whether the measures process is inappropriate for specific populations, instead the exclusions allows clinicians to engage in shared decision making with patients about the benefits and risks of screening when an individual has limited life expectancy.*

**Signifies that this CPT Category I code is a non-covered service under the Medicare Part B Physician Fee Schedule (PFS). These non-covered services should be counted in the denominator population for MIPS CQMs.*

Denominator Criteria (Eligible Cases):
Patients 51 to 74 years of age at the beginning of the measurement period

AND
Patient encounter during the performance period (CPT or HCPCS): 99201, 99202, 99203, 99204, 99205, 99212, 99213, 99214, 99215, 99341, 99342, 99343, 99344, 99345, 99347, 99348, 99349, 99350,

99385*, 99386*, 99387*, 99395*, 99396*, 99397*, G0438, G0439

AND NOT

DENOMINATOR EXCLUSIONS:

Women who had a bilateral mastectomy or who have a history of a bilateral mastectomy or for whom there is evidence of a right and a left unilateral mastectomy: G9708

OR

Hospice services used by patient any time during the measurement period: G9709

OR

Patients age 66 or older in Institutional Special Needs Plans (SNP) or residing in long term care with POS code 32, 33, 34, 54, or 56 for more than 90 days during the measurement period: G9898

OR

Patients 66 years of age and older with at least one claim/encounter for frailty during the measurement period AND a dispensed medication for dementia during the measurement period or the year prior to the measurement period: G2098

OR

Patients 66 years of age and older with at least one claim/encounter for frailty during the measurement period AND either one acute inpatient encounter with a diagnosis of advanced illness or two outpatient, observation, ED or nonacute inpatient encounters on different dates of service with an advanced illness diagnosis during the measurement period or the year prior to the measurement period: G2099

Table: Dementia Exclusion Medications

Description		Prescription
Cholinesterase inhibitors	Donepezil Galantamine	Rivastigimine
Miscellaneous central nervous system agents	Memantine	

NUMERATOR:

Women with one or more mammograms during the 27 months prior to the end of the measurement period

Definition:

Mammography screening is defined by a bilateral screening (both breasts) of breast tissue. If only one breast is present, unilateral screening (one side) must be performed on the remaining breast.

Numerator Instruction:

This measure evaluates primary screening. Do not count biopsies, breast ultrasounds, or MRIs because they are not appropriate methods for primary breast cancer screening.

Numerator Options:

Performance Met:

Screening, diagnostic, film, digital or digital breast Tomosynthesis (3D) mammography results documented and reviewed (**G9899**)

OR

Performance Not Met:

Screening, diagnostic, film, digital or digital breast Tomosynthesis (3D) mammography results were not documented and reviewed, reason not otherwise specified (**G9900**)

RATIONALE:

Breast cancer is one of the most common types of cancers, accounting for 15 percent of all new cancer diagnoses in the U.S. (Howlader et al, 2016). In 2015, over 3 million women were estimated to be living with breast cancer in the U.S. and it is estimated that 12 percent of women will be diagnosed with breast cancer at some point during their lifetime (Howlader et al, 2016).

While there are other factors that affect a woman's risk of developing breast cancer, advancing age is a primary risk factor. Breast cancer is most frequently diagnosed among women ages 55-64; the median age at diagnosis is 62 years (Howlader et al, 2016).

The chance of a woman being diagnosed with breast cancer in a given year increases with age. By age 40, the chances are 1 in 68; by age 50 it becomes 1 in 43; by age 60, it is 1 in 29 (American Cancer Society, 2017).

CLINICAL RECOMMENDATION STATEMENTS:

The U.S. Preventive Services Task Force (USPSTF) recommends biennial screening mammography for women aged 50-74 years (B recommendation).

The decision to start screening mammography in women prior to age 50 years should be an individual one. Women who place a higher value on the potential benefit than the potential harms may choose to begin biennial screening between the ages of 40 and 49 years (C recommendation). (USPSTF, 2016)

The USPSTF concludes that the current evidence is insufficient to assess the balance of benefits and harms of screening mammography in women aged 75 years or older (I statement). (USPSTF, 2016)

The USPSTF concludes that the current evidence is insufficient to assess the benefits and harms of digital breast tomosynthesis (DBT) as a primary screening method for breast cancer (I Statement). (USPSTF, 2016)

The USPSTF concludes that the current evidence is insufficient to assess the balance of benefits and harms of adjunctive screening for breast cancer using breast ultrasonography, magnetic resonance imaging, DBT, or other methods in women identified to have dense breasts on an otherwise negative screening mammogram (I statement). (USPSTF, 2016)

COPYRIGHT:

Physician Performance Measure (measures) and related data specifications were developed by the National Committee for Quality Assurance (NCQA). These performance measures are not clinical guidelines and do not establish a standard of medical care, and have not been tested for all potential applications. NCQA makes no representations, warranties or endorsements about the quality of any organization or clinician who uses or reports performance measures. NCQA has no liability to anyone who relies on measures and specifications or data reflective of performance under such measures and specifications.

The measures are copyrighted but can be reproduced and distributed, without modification, for noncommercial purposes (eg, use by healthcare providers in connection with their practices). Commercial use is defined as the sale, licensing, or distribution of the measures for commercial gain, or incorporation of the measures into a product or service that is sold, licensed or distributed for commercial gain. All commercial uses or requests for alteration of the measures and specifications must be approved by NCQA and are subject to a license at the discretion of NCQA. NCQA is not responsible for any use of the measures. © 2019 NCQA. All Rights Reserved.

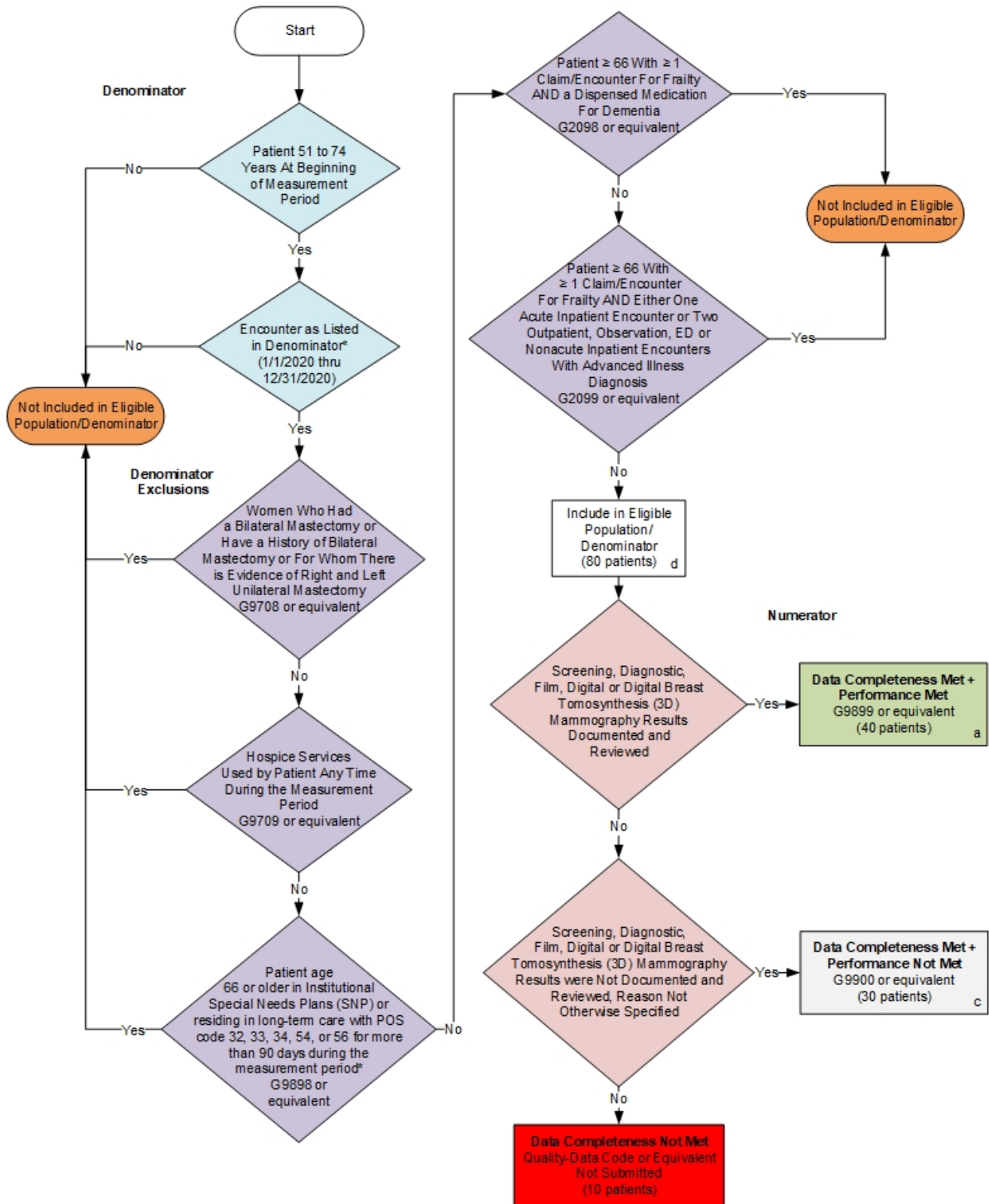
THE MEASURES AND SPECIFICATIONS ARE PROVIDED "AS IS" WITHOUT WARRANTY OF ANY KIND.

Limited proprietary coding is contained in the measure specifications for user convenience. Users of proprietary code sets should obtain all necessary licenses from the owners of the code sets. NCQA disclaims all liability for use or accuracy of any CPT or other codes contained in the specifications.

CPT® contained in the Measure specifications is copyright 2004-2019 American Medical Association. LOINC® copyright 2004-2019 Regenstrief Institute, Inc. This material contains SNOMED Clinical Terms® (SNOMED CT®) copyright 2004-2019 International Health Terminology Standards Development Organisation. ICD-10 is copyright 2019 World Health Organization. All Rights Reserved.

**2020 Clinical Quality Measure Flow for Quality ID #112 NQF# 2372:
Breast Cancer Screening**

Disclaimer: Refer to the measure specification for specific coding and instructions to submit this measure.



SAMPLE CALCULATION S:

Data Completeness=

$$\frac{\text{Performance Met (a=40 patients)} + \text{Performance Not Met (c=30 patients)}}{\text{Eligible Population / Denominator (d=80 patients)}} = \frac{70 \text{ patients}}{80 \text{ patients}} = 87.50\%$$

Performance Rate=

$$\frac{\text{Performance Met (a=40 patients)}}{\text{Data Completeness Numerator (70 patients)}} = \frac{40 \text{ patients}}{70 \text{ patients}} = 57.14\%$$

* See the posted measure specification for specific coding and instructions to submit this measure.
NOTE: Submission Frequency: Patient-Process

CPT only copyright 2019 American Medical Association. All rights reserved.
The measure diagrams were developed by CMS as a supplemental resource to be used in conjunction with the measure specifications. They should not be used alone or as a substitution for the measure specification.
v4

**2020 Clinical Quality Measure Flow Narrative for Quality ID #112 NQF #2372:
Breast Cancer Screening**

***Disclaimer:** Refer to the measure specification for specific coding and instructions to submit this measure.*

1. Start with Denominator
2. Check Patient Age:
 - a. If Patient 51 to 74 Years At Beginning of Measurement Period equals No, do not include in Eligible Population. Stop Processing.
 - b. If Patient 51 to 74 Years At Beginning of Measurement Period equals Yes, proceed to check Encounter Performed.
3. Check Encounter Performed:
 - a. If Encounter as Listed in the Denominator equals No, do not include in Eligible Population. Stop Processing.
 - b. If Encounter as Listed in the Denominator equals Yes, proceed to check Women Who Had a Bilateral Mastectomy or Have a History of Bilateral Mastectomy or For Whom There is Evidence of Right and Left Unilateral Mastectomy.
4. Check Women Who Had a Bilateral Mastectomy or Have a History of Bilateral Mastectomy or For Whom There is Evidence of Right and Left Unilateral Mastectomy:
 - a. If Women Who Had a Bilateral Mastectomy or Have a History of Bilateral Mastectomy or For Whom There is Evidence of Right and Left Unilateral Mastectomy equals Yes, do not include in Eligible Population. Stop Processing.
 - b. If Women Who Had a Bilateral Mastectomy or Have a History of Bilateral Mastectomy or For Whom There is Evidence of Right and Left Unilateral Mastectomy equals No, proceed to check Hospice Services Used by Patient Any Time During the Measurement Period.
5. Check Hospice Services Used by Patient Any Time During the Measurement Period:
 - a. If Hospice Services Used by Patient Any Time During the Measurement Period equals Yes, do not include in Eligible Population. Stop Processing.
 - b. If Hospice Services Used by Patient Any Time During the Measurement Period equals No, proceed to check Patients Age 66 or Older in Institutional Special Needs Plans (SNP) or Residing in Long-Term Care with POS code 32, 33, 34, 54, or 56 for more than 90 days During the Measurement Period.
6. Check Patient Age 66 or Older in Institutional Special Needs Plans (SNP) or Residing in Long-Term Care with POS code 32, 33, 34, 54, or 56 for more than 90 days during the measurement period:
 - a. If Patient Age 66 or Older in Institutional Special Needs Plans (SNP) or Residing in Long-Term Care with POS code 32, 33, 34, 54, or 56 for more than 90 days during the measurement period equals Yes, do not include in Eligible Population. Stop Processing
 - b. If Patient Age 66 or Older in Institutional Special Needs Plans (SNP) or Residing in Long-Term Care with POS code 32, 33, 34, 54, or 56 for more than 90 days during the measurement period equals No, proceed to check Patient 66 Years Of Age And Older With At Least One Claim/Encounter For Frailty During the Measurement Period AND A Dispensed Medication For Dementia During the Measurement

Period Or The Year Prior To the Measurement Period

7. Check Patient 66 Years Of Age And Older With At Least One Claim/Encounter For Frailty During The Measurement Period AND A Dispensed Medication For Dementia During The Measurement Period Or The Year Prior To The Measurement Period:
 - a. If Patient 66 Years Of Age And Older With At Least One Claim/Encounter For Frailty During The Measurement Period AND A Dispensed Medication For Dementia During The Measurement Period Or The Year Prior To The Measurement Period equals Yes, do not include in Eligible Population. Stop Processing.
 - b. If Patient 66 Years Of Age And Older With At Least One Claim/Encounter For Frailty During The Measurement Period AND A Dispensed Medication For Dementia During The Measurement Period Or The Year Prior To The Measurement Period equals No, proceed to check Patient 66 Years Of Age And Older With At Least One Claim/Encounter For Frailty During The Measurement Period AND Either One Acute Inpatient Encounter With A Diagnosis Of Advanced Illness Or Two Outpatient, Observation, ED Or Nonacute Inpatient Encounters On Different Dates Of Service With An Advanced Illness Diagnosis During The Measurement Period Or The Year Prior To The Measurement Period.
8. Check Patient 66 Years Of Age And Older With At Least One Claim/Encounter For Frailty During The Measurement Period AND Either One Acute Inpatient Encounter With A Diagnosis Of Advanced Illness Or Two Outpatient, Observation, ED Or Nonacute Inpatient Encounters On Different Dates Of Service With An Advanced Illness Diagnosis During The Measurement Period Or The Year Prior To The Measurement Period:
 - a. If Patient 66 Years Of Age And Older With At Least One Claim/Encounter For Frailty During The Measurement Period AND Either One Acute Inpatient Encounter With A Diagnosis Of Advanced Illness Or Two Outpatient, Observation, ED Or Nonacute Inpatient Encounters On Different Dates Of Service With An Advanced Illness Diagnosis During The Measurement Period Or The Year Prior To The Measurement Period equals No, include in Eligible Population.
 - b. If Patient 66 Years Of Age And Older With At Least One Claim/Encounter For Frailty During The Measurement Period AND Either One Acute Inpatient Encounter With A Diagnosis Of Advanced Illness Or Two Outpatient, Observation, ED Or Nonacute Inpatient Encounters On Different Dates Of Service With An Advanced Illness Diagnosis During The Measurement Period Or The Year Prior To The Measurement Period equals Yes, do not include in Eligible Population. Stop Processing.
9. Denominator Population:
 - a. Denominator Population is all Eligible Patients in the Denominator. Denominator is represented as Denominator in the Sample Calculation listed at the end of this document. Letter d equals 80 patients in the Sample Calculation.
10. Start Numerator
11. Check Screening, Diagnostic, Film, Digital or Digital Breast Tomosynthesis (3D) Mammography Results Documented and Reviewed:
 - a. If Screening, Diagnostic, Film, Digital or Digital Breast Tomosynthesis (3D) Mammography Results Documented and Reviewed equals Yes, include in Data Completeness Met and Performance Met.
 - b. Data Completeness Met and Performance Met letter is represented as Data Completeness and Performance Rate in the Sample Calculation listed at the end of this document. Letter a equals 40 patients in the Sample Calculation.

- c. If Screening, Diagnostic, Film, Digital or Digital Breast Tomosynthesis or 3D Mammography Results Documented and Reviewed equals No, proceed to check Screening, Diagnostic, Film, Digital or Digital Breast Tomosynthesis (3D) Mammography Results were Not Documented and Reviewed, Reason Not Given.
12. Check Screening, Diagnostic, Film, Digital or Digital Breast Tomosynthesis (3D) Mammography Results were Not Documented and Reviewed, Reason Not Given:
- a. If Screening, Diagnostic, Film, Digital or Digital Breast Tomosynthesis (3D) Mammography Results were Not Documented and Reviewed, Reason Not Given equals Yes, include in the Data Completeness Met and Performance Not Met.
 - b. Data Completeness Met and Performance Not Met letter is represented as Data Completeness in the Sample Calculation listed at the end of this document. Letter c equals 30 patients in the Sample Calculation.
- If Screening, Diagnostic, Film, Digital or Digital Breast Tomosynthesis (3D) Mammography Results were Not Documented and Reviewed, Reason Not Given equals No, proceed to check Data Completeness Not Met.
13. Check Data Completeness Not Met:
- a. If Data Completeness Not Met, the Quality Data Code or equivalent was not submitted. 10 patients have been subtracted from the Data Completeness Numerator in the Sample Calculation.

SAMPLE CALCULATIONS:

Data Completeness=

$$\frac{\text{Performance Met (a=40 patients)} + \text{Performance Not Met (c=30 patients)}}{\text{Eligible Population / Denominator (d=80 patients)}} = \frac{70 \text{ patients}}{80 \text{ patients}} = 87.50\%$$

Performance Rate=

$$\frac{\text{Performance Met (a=40 patients)}}{\text{Data Completeness Numerator (70 patients)}} = \frac{40 \text{ patients}}{70 \text{ patients}} = 57.14\%$$